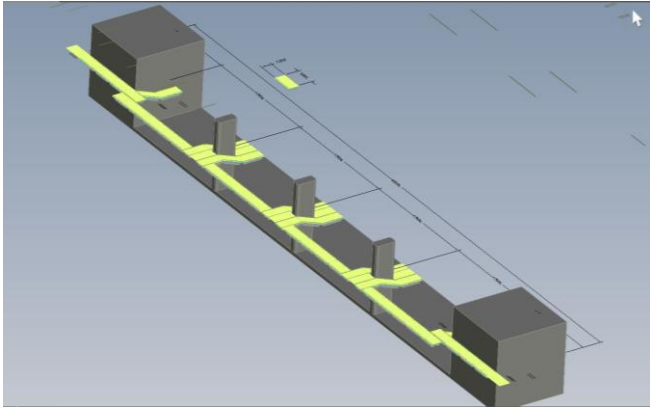


Industrial Marine floating walkways

Specialising in Industrial Marine requirements, Xrosswater GmbH was awarded the contract to design, build, supply and deliver a 140m walkway with all mooring equipment and analysis. The purpose of the walkway is to refurbish the deteriorating concrete on the weir columns and walls by allowing access on top of fast moving water (2mps) over the weir wall at one of Saudi Arabia's critical hydro electric / desalination plants operated by Marafiq.

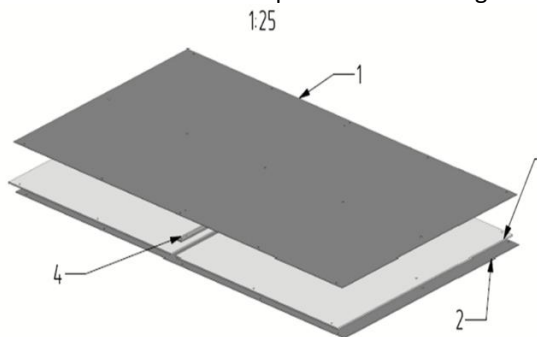


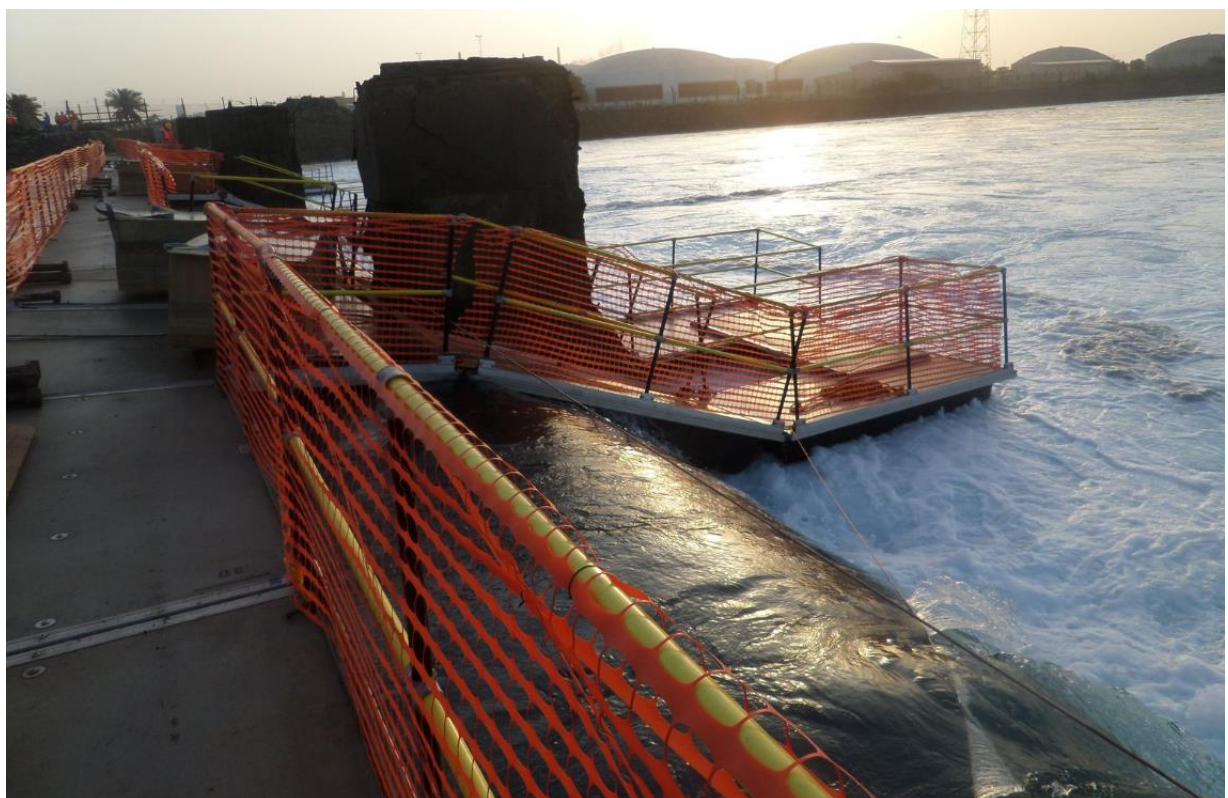






2 critical facts, among others, which differentiates Xrosswater from the plastic leisure “dock”, is its overall industrial strength joined with NON SLIP composite deck : Rating R11 to R13. UV Protected FRP sandwich. Made in German for Xrosswater GmbH







Project Managers